



UNIVERSITY OF
MARYLAND

MARYLAND HUB FOR
INCLUSIVE HIGHER EDUCATION

TerpsEXCEED

EXperiencing College for Education &
Employment Discovery

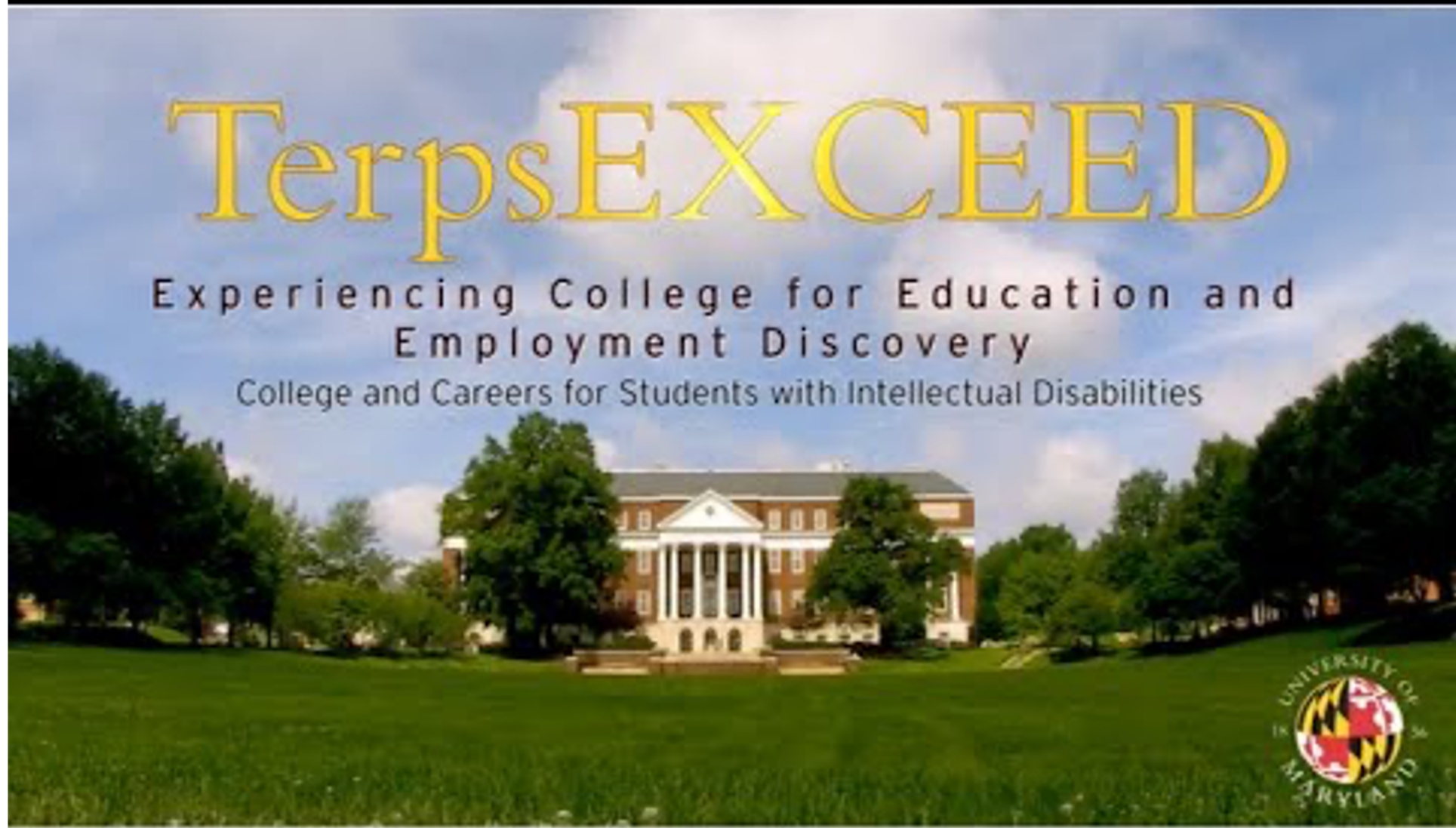
Higher Education for Students with Intellectual Disabilities: University of Maryland, College Park





COLLEGE OF
EDUCATION

CENTER FOR TRANSITION
AND CAREER INNOVATION



TerpsEXCEED

Experiencing College for Education and
Employment Discovery

College and Careers for Students with Intellectual Disabilities



What is TerpsEXCEED?

- TerpsEXCEED is a 2-year certificate program at the University of Maryland College Park
- For students with intellectual disabilities (ID) who would not be able to apply and attend UMCP through a traditional pathway
- A non-degree program that culminates in a UMD certificate
 - Includes a transcript of all students' academic coursework (audit and P/F allowed)
 - Aligned with students' career interests
- Students participate in career development activities, work experiences, internships and paid jobs.

Who we are



UNIVERSITY OF
MARYLAND
MARYLAND HUB FOR
INCLUSIVE HIGHER EDUCATION

TerpsEXCEED

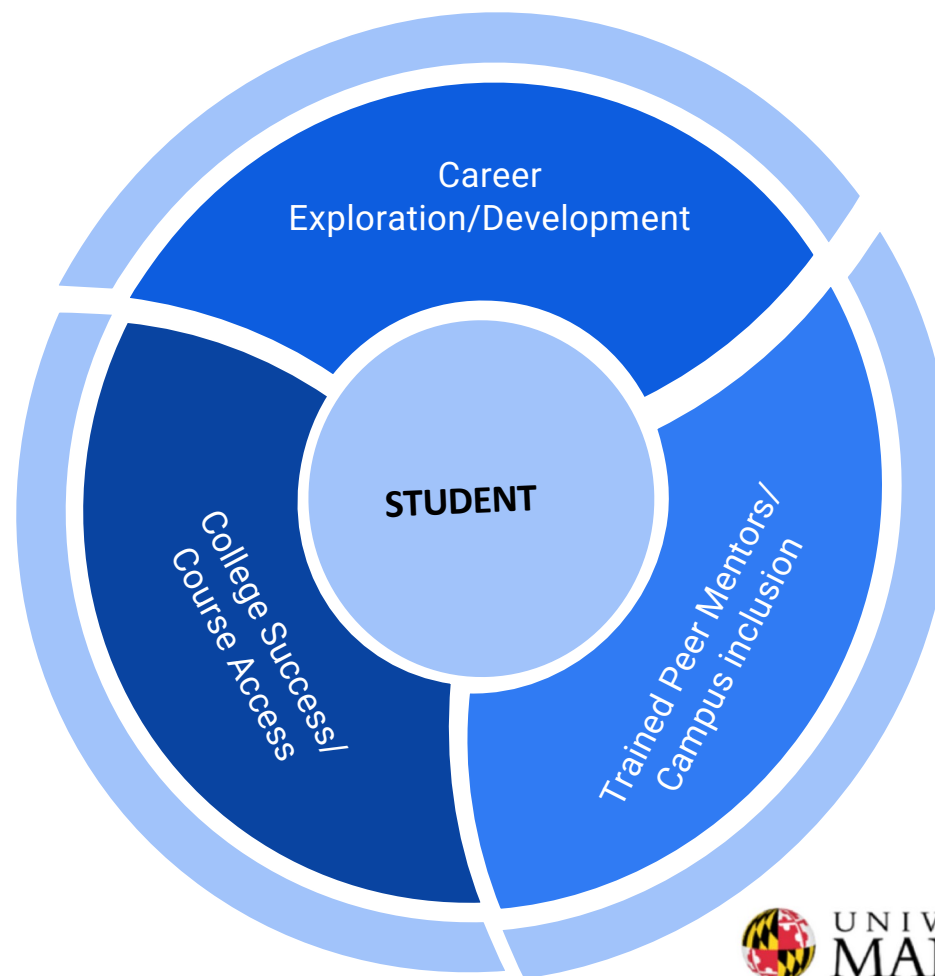
EXperiencing College for Education &
Employment Discovery

Who is TerpsEXCEED for?

The student who will benefit the most from TerpsEXCEED:

- Age: 18-26 at start of program with documented intellectual disability
- Willing to and capable of attending and completing UMD academic coursework (at audit level at least)
- Has work experience
- Has experience with or shows ability for independent living
- Can manage time and activities without one-on-one support (this program does not offer 24/7 assistance)
- Has access to and knows how to use a cell phone to communicate
- Wants to attend a large university (UMCP has roughly 40,000 students) and exhibits appropriate behavior for a college campus setting (all students will be held to the UMD Student Code of Conduct: <https://policies.umd.edu/assets/section-v/V-100B.pdf>)
- Enjoys engaging in social activities and has interest in joining student organizations
- Meets additional eligibility criteria (see top of Application)

TerpsEXCEED Focus Areas

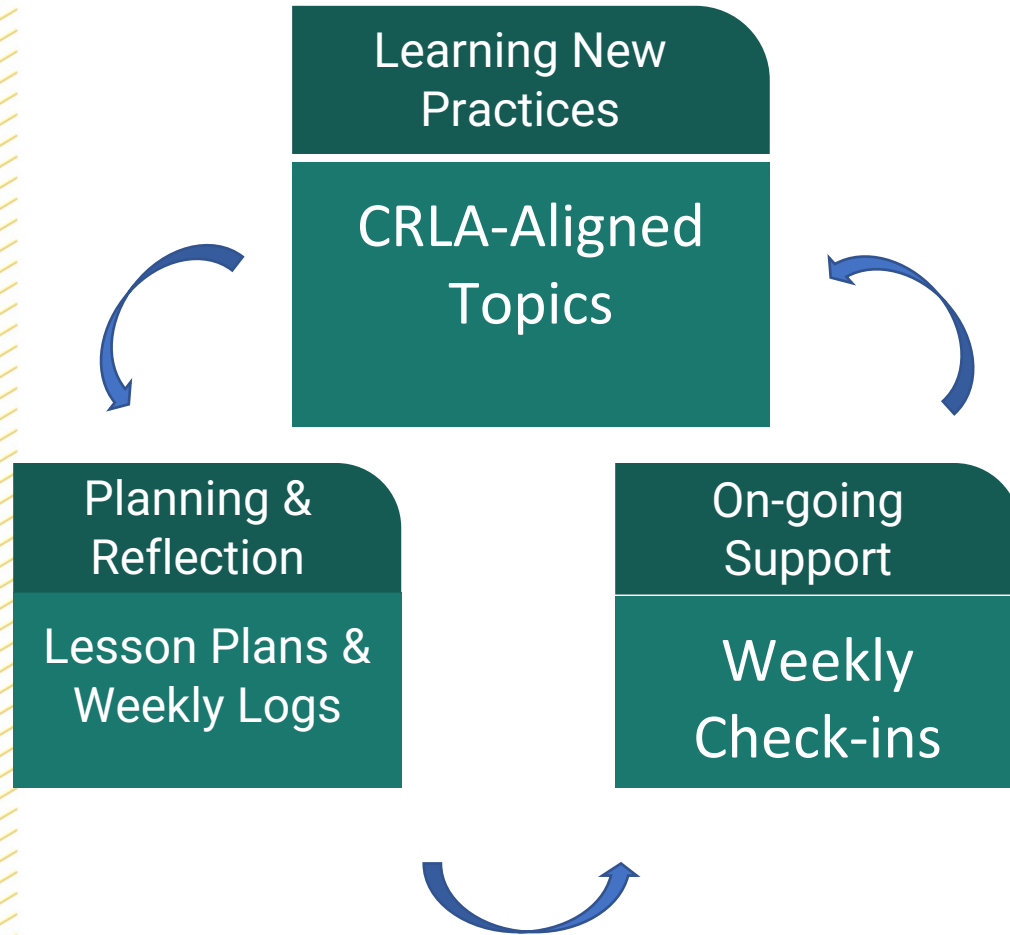


Academic, Social and Career Supports

- Individualized Goal Setting and Tracking
- Trained RAs
- Informed Professors
- Peer Mentor coordination and collaboration to provide supports
 - Assignments, tests, classroom
 - On-the-job
 - Social/Communication

We do not provide 24/7 support

Peer Mentors



TerpsEXCEED Admissions

- Application Timeline:
 - Opening in December 1; closes February 1; Decisions by April 1
 - Student and Family Interviews for those found eligible
 - Housing submissions must be in by May 1
 - Application materials on our website: <https://www.ihehub-umd.org/terps-exceed>
- Fees:
 - Typical UMD tuition, Room/Board and Fees apply: <https://financialaid.umd.edu/resources-policies/cost-attendance>
 - Program Fee for extra programmatic supports \$3,750 per semester (students with self-directed waiver funds may be eligible for fee assistance)
 - Financial Aid through Comprehensive Transition Program for students with ID
 - Support for eligible Students with current VR cases with Maryland DORS

What families need to know



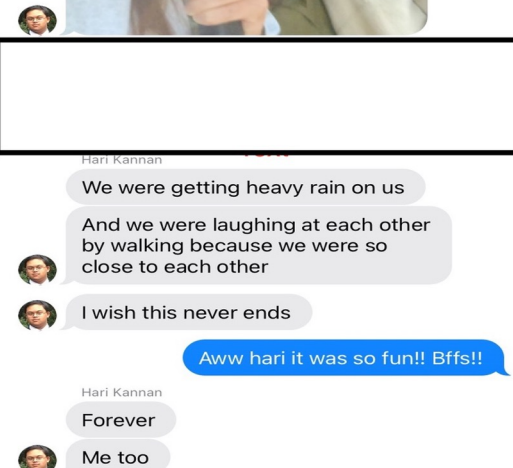
UNIVERSITY OF
MARYLAND
MARYLAND HUB FOR
INCLUSIVE HIGHER EDUCATION

TerpsEXCEED

EXperiencing College for Education &
Employment Discovery

- Power of choice
- Dignity of risk- ok to fail, make mistakes, learn to problem solve, develop resilience, get lost- figure out what to do!
- We do NOT provide 24/7 support- need to be able to navigate campus, dorm life, be appropriate in the classroom, and manage down time
- Fading of supports at home
- Community agencies connections
- Changing of roles from advocate to advisor (don't write emails for, don't order for, don't set schedules, don't contact professors, ADS... etc.)
- Different rights and responsibilities- students and families
- Skill development at home and in the community- navigate campus, community, managing a calendar, man
- Financial resources- DORS, DDA

College Success: Inclusion Works!



It was an honor to meet Hari, one of our students in the new TerpsEXCEED program, and his peer mentor Jenna. This program makes me proud of our commitment to inclusive excellence.



Tweet your reply



College Success: Inclusion Works!



Resources

ihehub@umd.edu

* <https://www.ihehub-umd.org/terps-exceed>

[Diamondback TerpsEXCEED](#)

<https://today.umd.edu/inclusion-matters>

[NBC TerpsEXCEED News Clip](#)

@TERPSEXCEED_UMD

Amy Dwyre D'Agati adwyre@umd.edu

Meredith Gramlich mgramlic@umd.edu



TerpsEXCEED
EXperiencing College for Education &
Employment Discovery

Questions?

