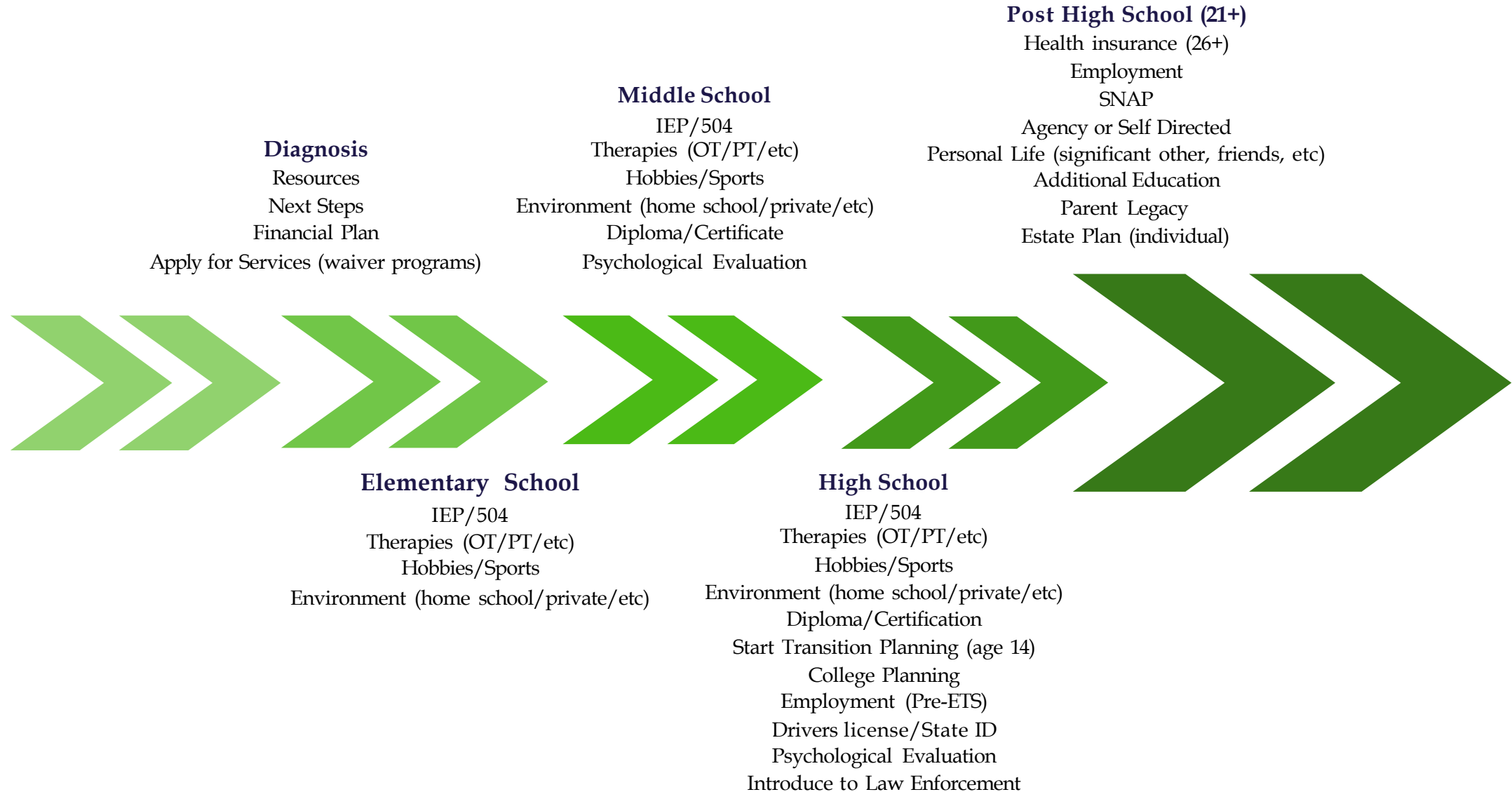




# Navigating the Journey

A comprehensive guide for parents of children with disabilities

# Planning Timeline






# Diagnosis



# Next Steps

- Connect the family with resources
    - National Down Syndrome Society, Autism Speaks, NORD, etc.
  - Apply for services
    - (Medicaid Waiver, SSI, etc)
  - Get a clear picture about their finances (a “financial plan”)
  - Learn about Special Needs Trusts and Estate Planning
- 



# School Years

Elementary to High School

# Elementary & Middle

- IEP/504
- Therapies (OT, Music, etc)
- LISS Funding
- Hobbies/sports
- Diploma or certificate
- Psychological evaluation



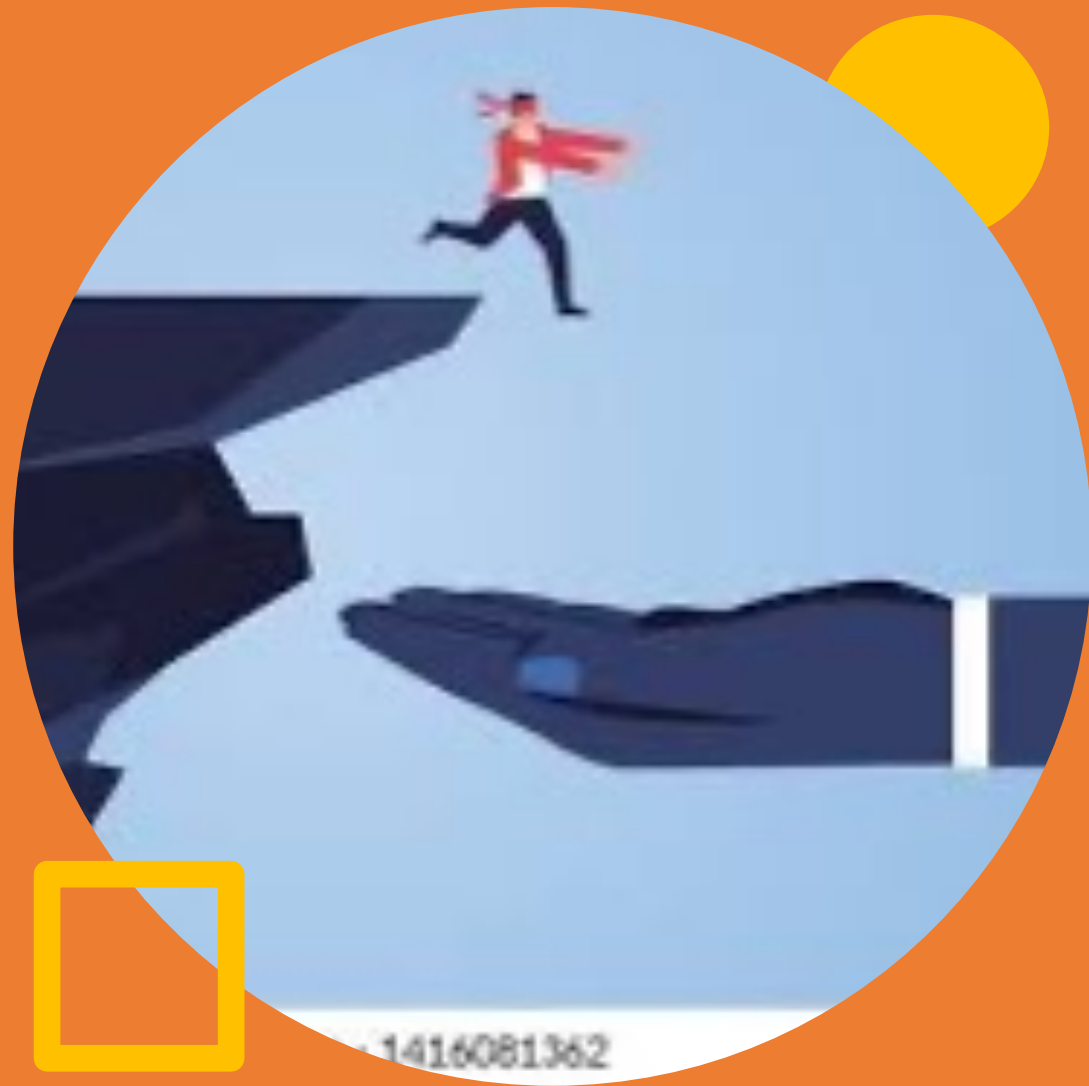
# High School

- Start Transition Planning
- Driver's license/state ID
- Employment (Vocational Rehabilitation)
- Introduce to Law Enforcement
- College planning
- Psychological evaluation



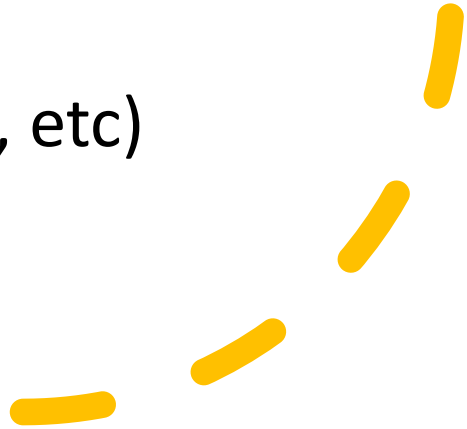


18+





## Ages 18 - 21

- Services (Private Pay)
  - Social Security
  - Selective Service (males)
  - Employment (Vocational Rehabilitation)
  - Guardianship or Supported Decision Making
  - Register to vote
  - Housing
  - Freeze Credit
  - Addt'l education (college, trades, etc)
- 

Ages 21+

- Employment (Vocational services)
- Agency or self-directed
- Personal life
- Parent legacy
- Estate plan (individual)
- Health insurance (26+)

# TRUENORTH

## DISABILITY PLANNING



Eric Jorgensen

[eric@specialneedsnavigator.us](mailto:eric@specialneedsnavigator.us)

<https://truenorthdisabilityplanning.com/>